

INSTALLATION GUIDE

FRAMELESS ACRYLIC FRAMES MOUNTED WITH STANDOFF SYSTEMS WM15 / WM05 Standoff Supports or Similar

IMPORTANT: Always check the installation surface to ensure that the substrate will be strong enough to hold the weight of the panel.

1) Using a measuring tape and a leveler; locate and mark all fixing points for each four or more standoffs as shown in "Wall Install Template / Diagram". Affix the brass fitting (A) to wall using a suitable fixing depending on the wall type:

- for wood stud walls use a wood screw.
- for cavity/plaster wall use a spring toggle bolt or twist-n-lock anchors.
- for solid/concrete wall use a raw-plug and screw.

2) Thread standoff barrels (B) tightly onto the wall plugs / brass fittings (A), and repeat procedure for all standoff fittings at each corner of the panel.

3) Attach the main back-board (E - usually frosted, black, or white acrylic) onto standoff spacers (B) and affix using the standoff front screw-caps (C).

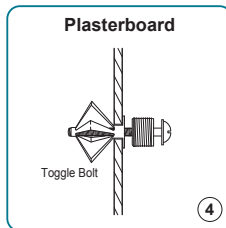
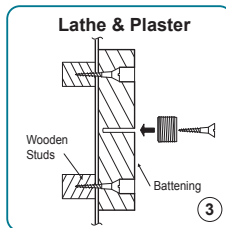
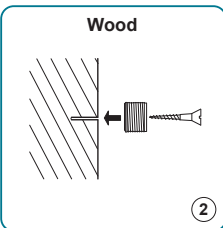
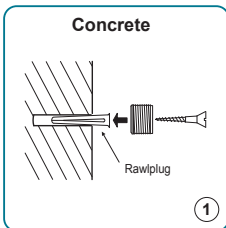
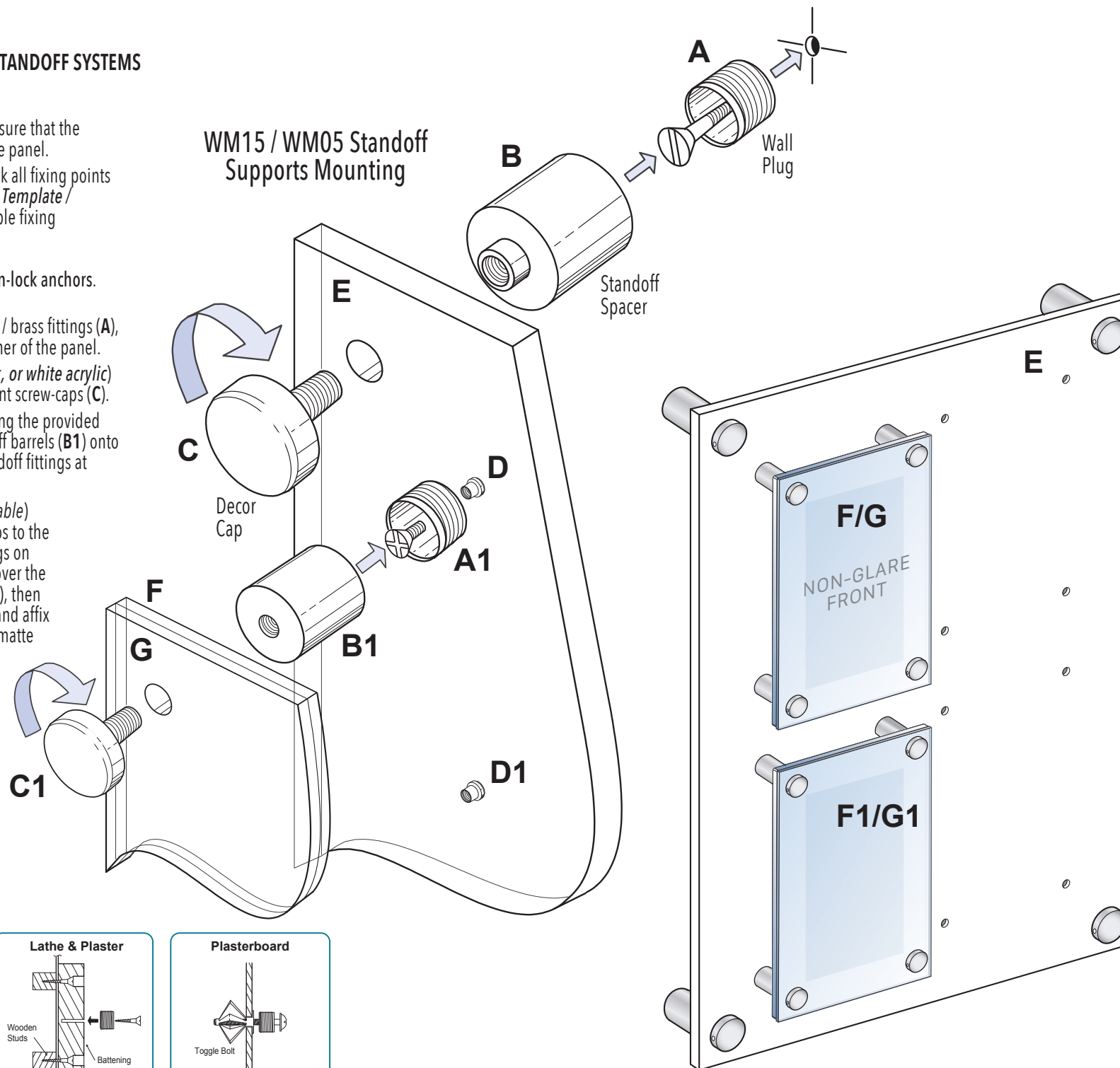
4) Affix the brass fittings (A1) to the main backboard using the provided screws and anchors (D). Then, thread the smaller standoff barrels (B1) onto the brass fittings (A1). Repeat this procedure for all standoff fittings at each pre-drilled hole on the main panel.

5) Using low-tack (3M™ 9415PC Removable Repositionable) double-sided adhesive tape, mount the individual photos to the front face of the back panel (F). The laser-etched markings on the acrylic back piece allow for easy insert placement. Cover the back panel and photos with the non-glare front panel (G), then attach the photo frame set (F/G) to the standoff spacers and affix them with the front caps (C1). Make sure the non-glare/matte surface of the cover panel is facing the front.

6) The standoff caps can be tightened by inserting a small Allen wrench into the hole located on the side of the cap for added torque. Important to make sure that all wall plugs (A) are securely tightened.

NOTE: For lightweight display components such as small and medium size acrylic frames and holders Nova Display Systems provides twist-n-lock anchors. It is at your discretion to use the anchors provided or use similar product rated for 50 to 75 lb weight limit.

WM15 / WM05 Standoff Supports Mounting



NOVADISPLAY™
INNOVATIVE DISPLAY SOLUTIONS

Nova Display Systems, Inc.
875 Wilson St., Ste. A-B
Eugene, OR 97402
541.505.7450
541.505.9919 fax
sales@novadisplaysystems.com
www.novadisplaysystems.com

Wall Display Concept

ID: DC1234-37
DC1239-39A

Title: Large Poster Wall Display

Installation Guide

ID: DC1234/37-INST
DC1239-INST

NOTE: It is important to check the strength of the wall fixing(s). Nova Display Systems takes no responsibility for incorrect installation. This responsibility relies with the installer.

Note: This drawing is the property of Nova Display Systems and is not to be reproduced or copied in whole or in part. It is only to be used for the project and site specifically identified herein and is not to be used on any other projects, or for the purpose of manufacturing and reproduction. It is to be returned upon request.

Sheet:

Page: 1 of 1

Scale: n/a